



PLANET – Mid-Term Review

20 January 2022, 09:00pm-15:25pm, Virtual

PLANET's Mid-term Review took place the 20th of January, 19 months after the project's kick-off. The objective of the meeting was to update the headway that resulted until the middle of the project.

PLANET project focus on two main pillars: understanding and assimilating global geo-economic and trade imperatives and leveraging disruptive technologies for efficiently connecting infrastructure and optimizing the use of current and emerging transport nodes.

The first part of the event presented EGTN's concept and its reference specification, as well as PLANET's four published Position Papers. The main conclusions of WP1 work presented during PLANET's mid-term review are as follows:

- The **Corridor Connectivity Index** visualizes the attractiveness of the nodes and the network resulting from technology implementations as well as geo-economic decisions.
- The importance of **investing in infrastructure capacity** in order to offer adaptive solutions, better in reliability and cost, as the **upcoming trade routes will change the dynamics of regional transport systems such as TEN-T**.
- PLANET's research activities also highlighted that the **viability of the emerging routes, as well as interoperability of the trains** circulating between Europe and Asia, are significant determined by **operational and political issues**.
- The **implementation of Physical Internet (PI) will facilitate collaboration between supply chain stakeholders, improve efficiency in the use of infrastructures**, mainly through less fragmented logistics networks and the promotion of logistics integration and collaboration, **increase multimodality and resilience to unexpected events**.
- PLANET has also **defined the minimum required technological functionalities so as a PI governance model**. The selection of a **bottom-up approach for EGTN governance** let the different stakeholders will agree among themselves to develop parts of the network as independent supply networks built on the PI model, thus forming different "islands" with their own rules. More information about the infrastructure, services and specifications can be found in the [Newsletter #4](#).

The meeting was followed by the remaining PLANET's work packages presentations. More specifically, WP2 presentations explained the EGTN open-ICT platform architecture, its services based on Big Data analytics model and the Multi-Actor Multi-Criteria Analysis models, accompanied by technical and scientific discussions.

Subsequently, PLANET's WP3 presented the different developments and progress of project's Living Labs (LLs):

- The **LL1: Asia-Europe Corridor** aims to optimize and improve the complete supply chain by using new technologies such as IoT, AI y Blockchain. In the course of the project, it has standardized and optimized an algorithm for identifying transport delays, along with redesigning routes and identifying the optimal hub calls.

Learn more by visiting our website

www.planetproject.eu

Follow us on the social media

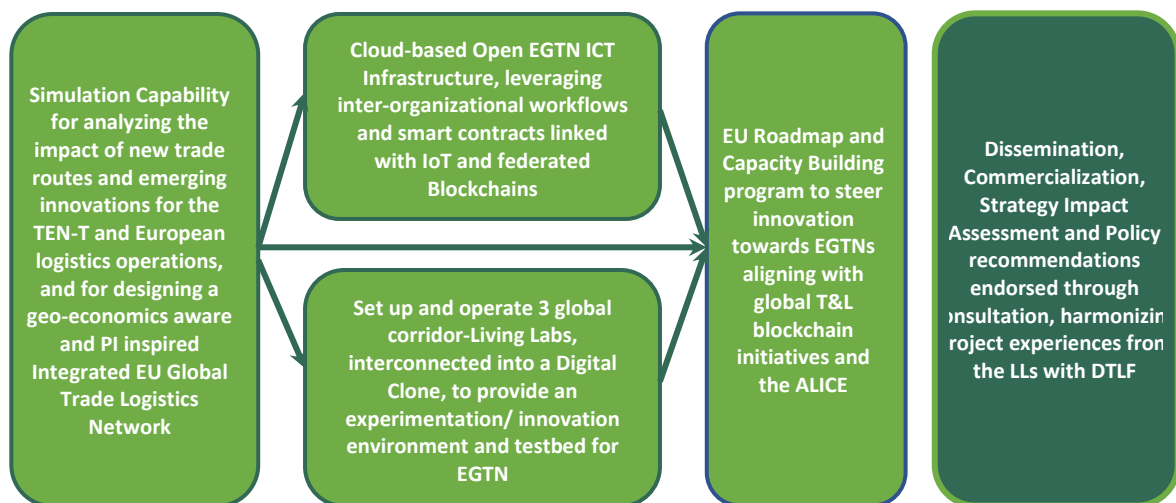


This project is funded from the European Union's Horizon 2020 research and innovation programme under grant agreement No 860274

The views expressed by the PLANET Consortium do not necessarily represent the views of the EU Commission/INEA. The Consortium and the EU Commission/INEA are not responsible for any use that may be made of the information it contains

- The **LL2: China-Rotterdam/USA through rail** examines the role of new technologies (e.g. blockchain) on intercontinental rail services, promoting EU's strategic cooperation with China and USA and establishing multimodal solutions. In addition, LL2 will restudy the flows to UK after leaving Europe. Finally, it was pointed out during LL2 presentations that Brexit has acted as a catalyst for adopting emerging technologies and digitalisation of travel processes and documentation, through Blockchain. To that end, Living Lab 2 goals
- The **LL3: IoT for Silk Road Route** works for a reliable, transparent and fully connected corridor from China to EU. In this purpose, it standardizes and digitalizes the information fluxes, likewise it increases the visibility of goods with the use of Internet of Things (IoT). During the development of the LL, it concluded that real time information is needed in order to supervise and optimize the supply chain. The pandemic has outstod the importance of flexible solutions in the modality of transport and its duration. Processes have also been mapped and simulated to be a reference for the logistics market and industry professionals.

The meeting concluded with presentations from WP4 and WP5, describing the roadmap and activities for providing support and building up capacity toward EGNT development and the dissemination of project's results and activities. In this last WP, the focal point was the deliverables D5.2 Advisory Board Observations and Recommendations and D5.4 Communication and Dissemination Report. Among the conclusions, it was noted that all KPIs are performing satisfactorily and that the Advisory Board recommendations were very helpful from the international perspective and the expertise provided, helping to maximise the impacts of the PLANET Project.



Learn more by visiting our website

www.planetproject.eu

Follow us on the social media



This project is funded from the European Union's Horizon 2020 research and innovation programme under grant agreement No 860274

The views expressed by the PLANET Consortium do not necessarily represent the views of the EU Commission/INEA. The Consortium and the EU Commission/INEA are not responsible for any use that may be made of the information it contains